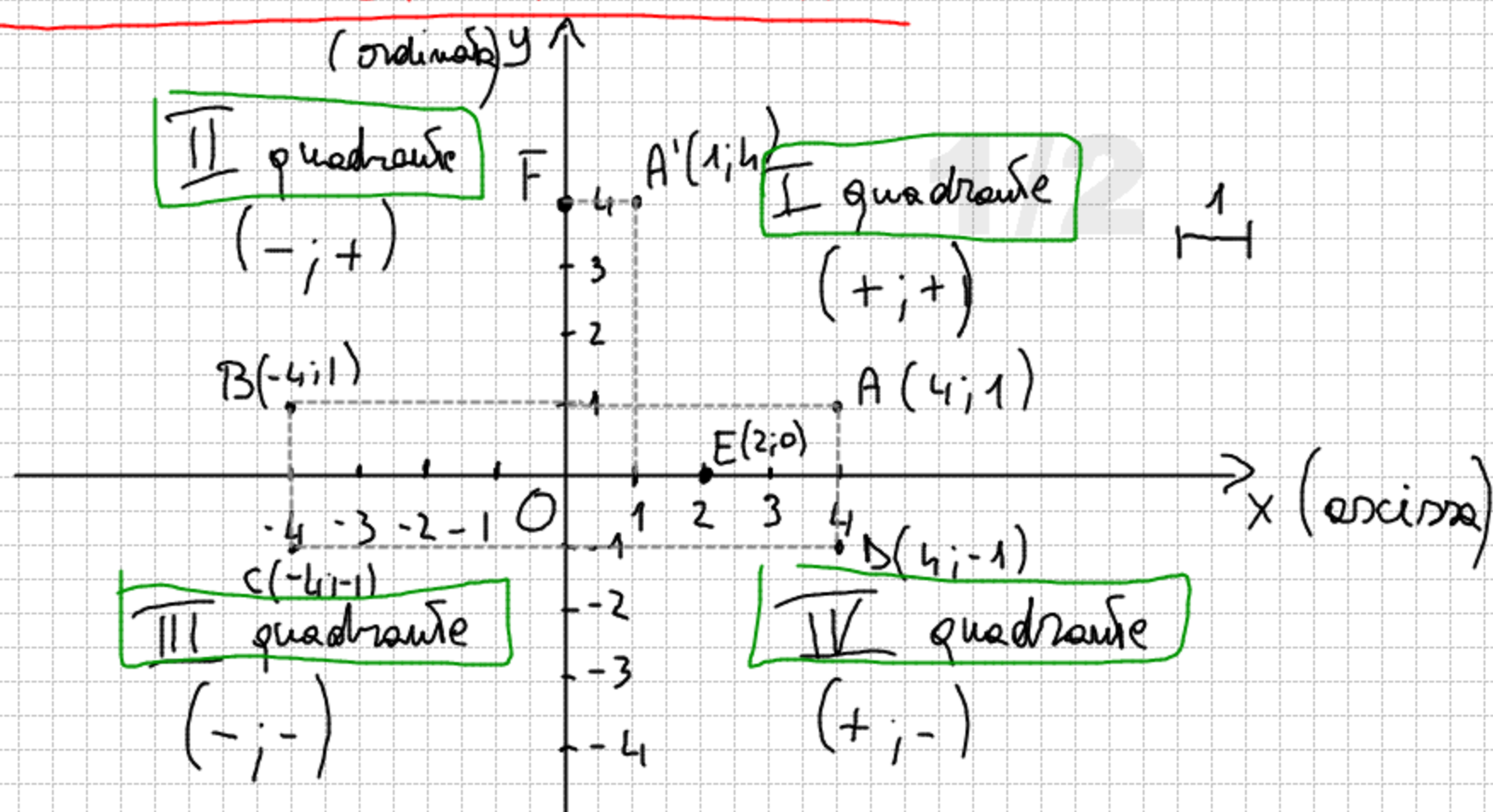
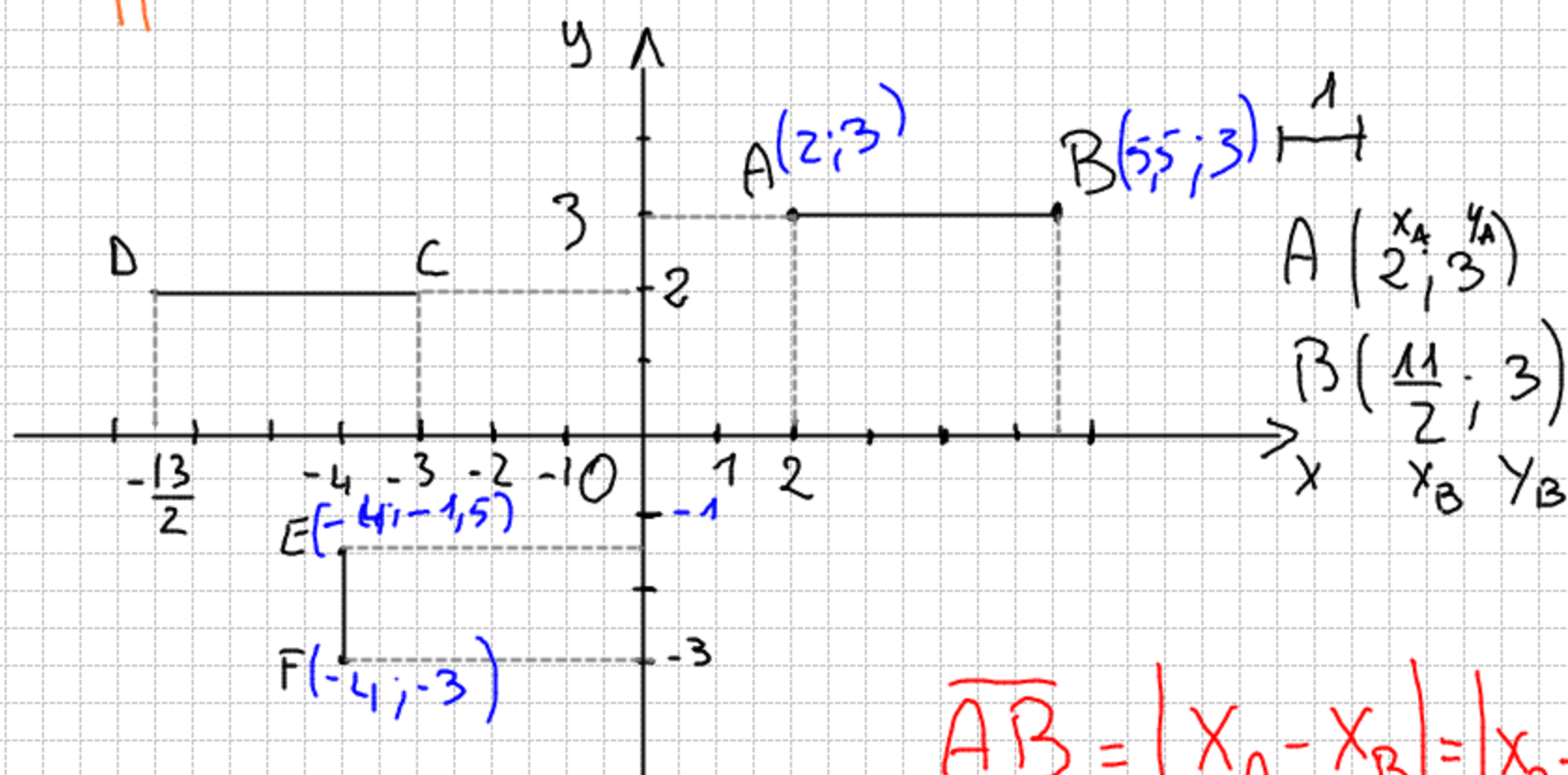
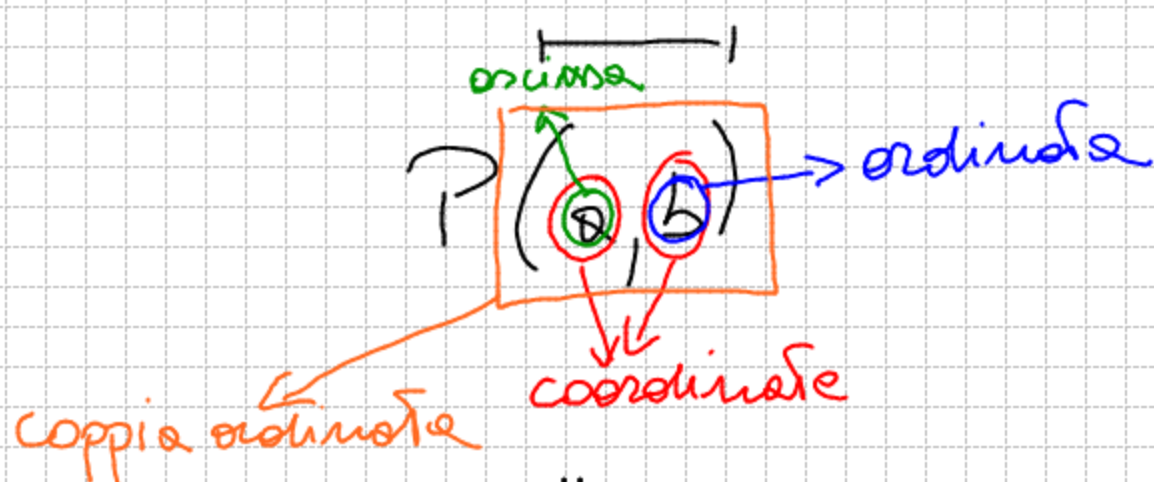


# PUNTI E RETTE NEL PIANO



## $P(x; y)$ COORDINATE CARTESIANE

- I punti che si trovano sopra l'asse delle ascisse sono punti che hanno ordinata nulla.  $E(2;0)$
- I punti che si trovano sopra l'asse delle ordinate sono punti che hanno ascissa nulla.  $F(0;4)$



$$\overline{AB} = |x_A - x_B| = |x_B - x_A|$$

$$\overline{AB} = |x_B - x_A| = \left| \frac{11}{2} - 2 \right| = \left| \frac{11-4}{2} \right| = \left| \frac{7}{2} \right| = \frac{7}{2}$$

$$\left( \overline{AB} = |x_A - x_B| = \left| 2 - \frac{11}{2} \right| = \left| \frac{4-11}{2} \right| = \left| -\frac{7}{2} \right| = \frac{7}{2} \right)$$

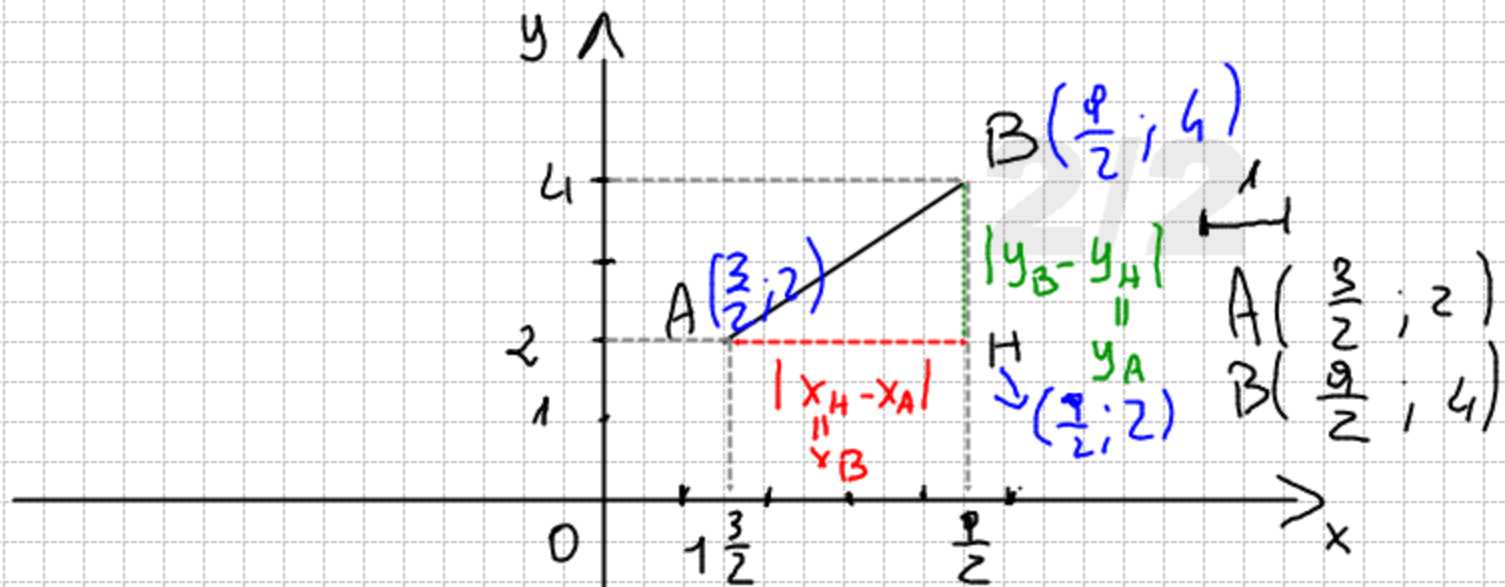
$$\overline{CD} = |x_C - x_D| = \left| -3 - \left(-\frac{13}{2}\right) \right| = \left| -3 + \frac{13}{2} \right| = \left| \frac{-6+13}{2} \right| = \left| \frac{7}{2} \right| = \frac{7}{2}$$

C(-3; 2)  
D(-13/2; 2)

$$E\left(-4; -\frac{3}{2}\right) \quad F(-4; -3)$$

$$\overline{EF} = |y_E - y_F| = \left| -\frac{3}{2} - (-3) \right| = \left| -\frac{3}{2} + 3 \right| = \left| \frac{3}{2} \right| = \frac{3}{2}$$

$$\left( \overline{EF} = |y_F - y_E| = \left| -3 - \left(-\frac{3}{2}\right) \right| = \left| -3 + \frac{3}{2} \right| = \left| -\frac{3}{2} \right| = \frac{3}{2} \right)$$



$$\overline{AB} = \sqrt{\overline{AH}^2 + \overline{HB}^2}$$

$$x_H = x_B$$

$$y_H = y_A$$

$$\overline{AB} = \sqrt{(x_B - x_A)^2 + (y_B - y_A)^2} = \sqrt{(x_B - x_A)^2 + (y_B - y_A)^2} =$$

$$= \sqrt{\left(\frac{3}{2} - \frac{9}{2}\right)^2 + (2 - 4)^2} = \sqrt{\frac{36}{4} + 4} = \sqrt{\frac{36+16}{4}} = \sqrt{\frac{52^{26} 13}{4_2, 1}} =$$

$$= \sqrt{13}$$